

1.0 QuickBooks Install

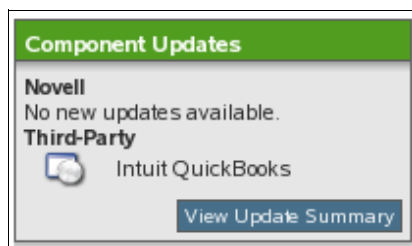
NOTE: Before beginning QuickBooks install, verify that the following **REQUIRED** components are installed:

- eDirectory
- iManager
- Samba

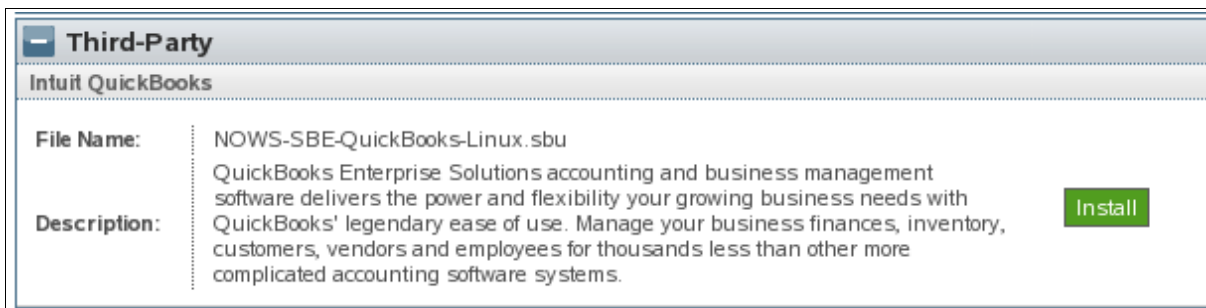
For further information, see the NOWS SBE Administration and Install Guide at

<http://www.novell.com/documentation/nows/>

1. To begin the QuickBooks install, log in to the NOWS SBE console.
2. From the Components Updates menu, click *View Update Summary*.



3. From the Third-Party menu panel, under Intuit QuickBooks, click *Install*.



4. Click *Add/Remove* under Components menu panel. Verify that iManager, eDirectory, and Samba are installed. The specified components are required to be installed before QuickBooks.

The screenshot displays the Novell OpenWorkgroupSuite Small Business Edition administration interface. At the top, the Novell logo is on the left, and the text "OpenWorkgroupSuite Small Business Edition" is on the right. Below the header, a status bar indicates "You are logged in as sbsadmin".

The interface is divided into two main columns. The left column contains a navigation menu with the following sections:

- Components** (circled in red):
 - Products and Services
 - Add/Remove
 - Desktop Downloads
 - Help Links
 - Management Links
- Tasks**:
 - Manage License Keys
 - Upload Packages
 - Remote Administration
 - Users and Groups
 - Set Language
- Basic View**:
 - Click here for non-privileged user downloads
- NOWS Server Updates**:
 - New updates available.
 - [View Update Summary](#)
- Component Updates**:
 - Novell**: No new updates available.
 - Third-Party**: No new updates available.
 - [View Update Summary](#)

The right column contains five expandable sections, each with a plus sign icon and a title:

- Products and Services**
- Desktop Downloads**
- Help Links**
- Management Links**
- Remote Administration**


5. Click *Business Applications*, next to Intuit QuickBooks click *Install*.

Novell

You are logged in as **sbsadmin**

OpenWorkgroupSuite

SmallBusiness Edition



Components

- Products and Services
- Add/Remove
- Desktop Downloads
- Help Links
- Management Links

Tasks

- Manage License Keys
- Upload Packages
- Remote Administration
- Users and Groups
- Set Language

Basic View

Click here for non-privileged user downloads

NOWS Server Updates

New updates available.

[View Update Summary](#)

Component Updates

Novell
No new updates available.




Third-Party
No new updates available.

[View Update Summary](#)

Add/Remove Open Workgroup Suite Software




The following software is installed on this server. Select Uninstall to remove the software from the server.

Installed Software

	Directory Services (eDirectory) With a directory service, you have a systematic way to unify identities, resources, and devices with policies, applications, files, people, peripheral devices, and other network components.	Uninstall
	Management Tools (iManager) Novell iManager is a Web based administration console that provides customized access to network administration utilities and content from virtually any location in the world.	Uninstall
	Windows File and Print Sharing (Samba) Samba is an Open Source/Free Software suite that provides seamless file and print services to SMB/CIFS clients.	Uninstall

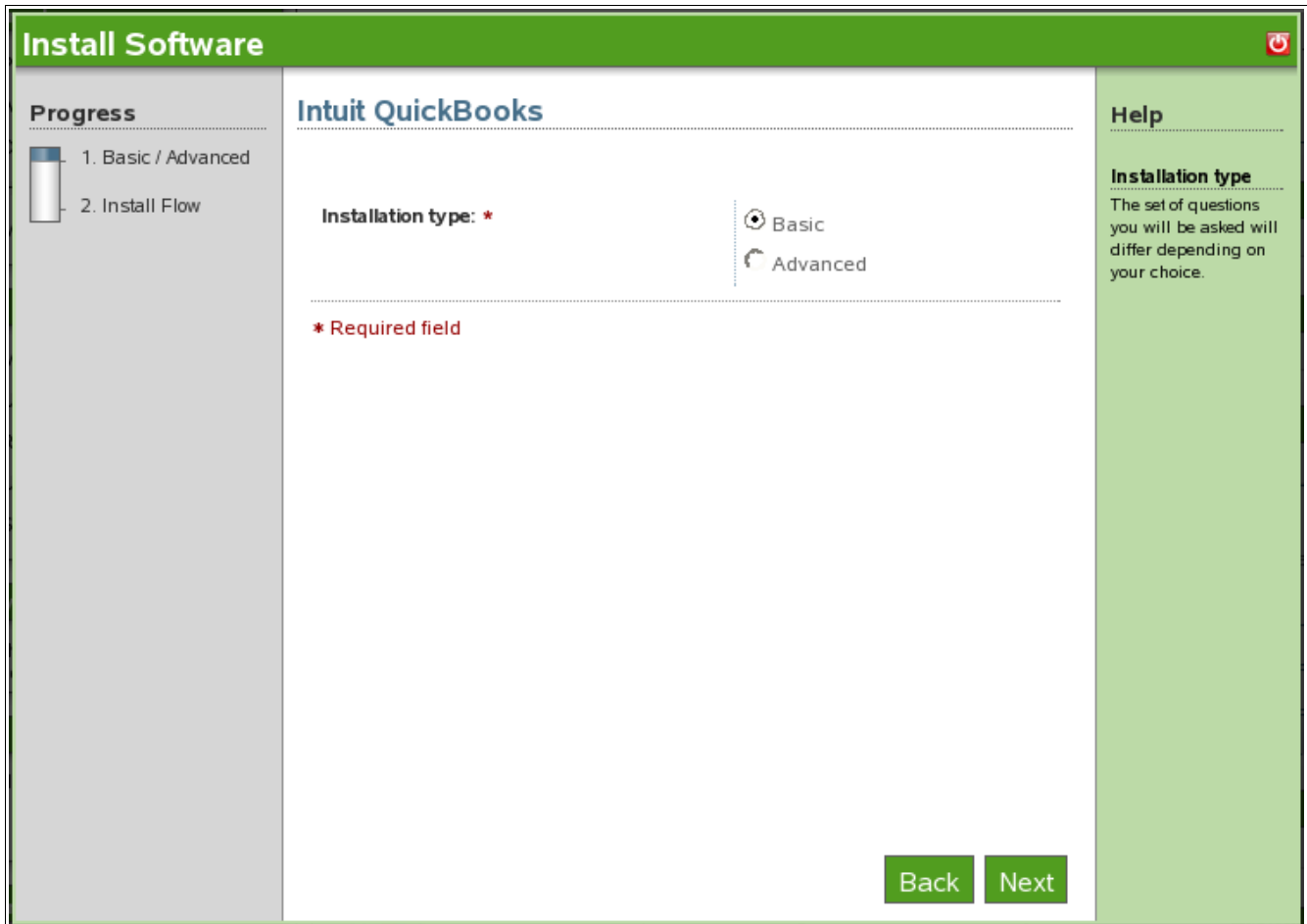
The following software is available to install on the this server. Select install to add the software to the server.

Available Software

- [+ All](#)
- [+ Backup Restore and Recovery](#)
- [- Business Applications](#)
 -  **OpenOffice.org**
OpenOffice.org is a multiplatform and multilingual office suite and an open source project. It is compatible with all other major office suites. [Install](#)
 -  **Personal File Backup (iFolder)**
Novell iFolder is a simple and secure storage solution that can increase your productivity by enabling you to back up, access and manage your personal files from anywhere, at anytime. [Install](#)
 -  **Intuit QuickBooks**
You can rely on QuickBooks to manage your small business accounting and finances. Pay bills, print checks, track expenses, manage payroll, invoices, purchase orders, and reports...and more. [Install](#)
- [+ Collaboration Groupware and Messaging](#)
- [+ File Print and Fax](#)
- [+ Security Management](#)
- [+ Systems Management](#)

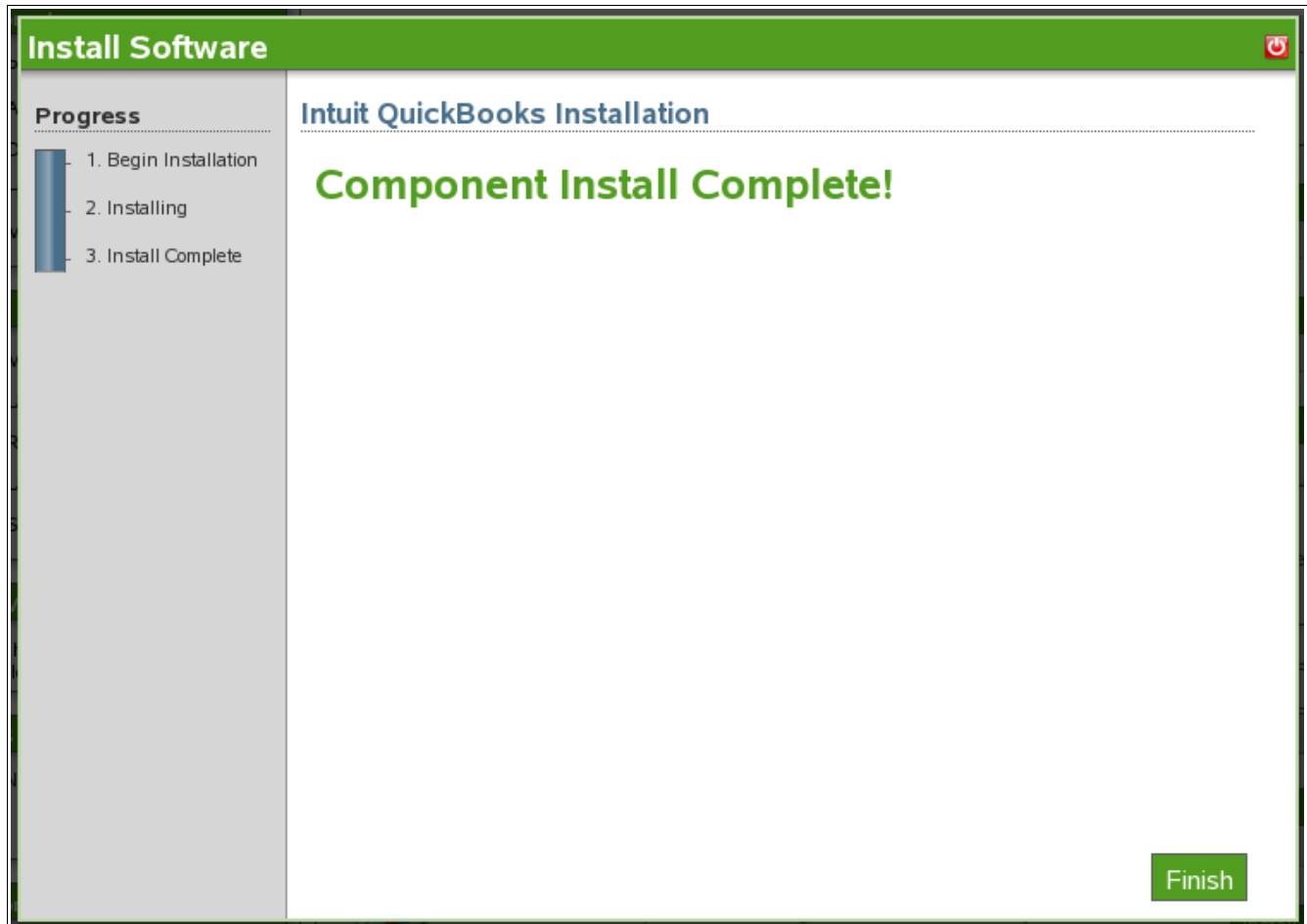
1.1 QuickBooks Basic Install

1. Select *Basic*, and click *Next*.



2. Click *Next* to continue with install.

- QuickBooks basic install is now complete. Click *Finish* to proceed to Installed Software page. QuickBooks will now be listed under the installed Software list.



2.0 Post-Installation

2.1 Creating a Samba Share for QuickBooks

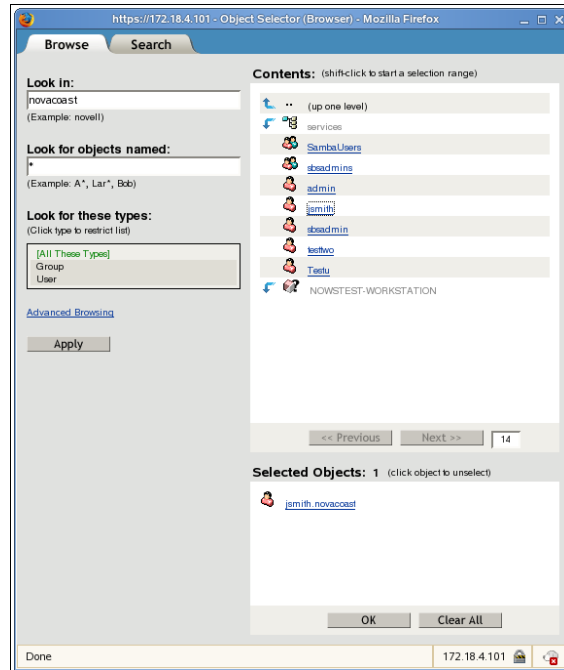
1. Log in to NOWS SBE console.
2. Click *Products and Services*.
3. Click *Windows File and Print Sharing (Samba)*.
4. Click *Samba Administration*.
5. Click *Users* and click *Create User*.
6. Specify user information and Set Simple Password, then click *OK*.

2.2 Creating a Samba Share for QuickBooks

2.2.1 Enabling User for Linux

1. Log on to to NOWS SBE console.
2. Click *Products and Services* menu panel.
3. Click *Windows File and Print Sharing (Samba)*.
4. Click *Samba Administration*.
5. Next click *Linux User Management*.
6. Click *Enable Users for Linux*.

7. Click *Object Selector* (magnifying glass icon).

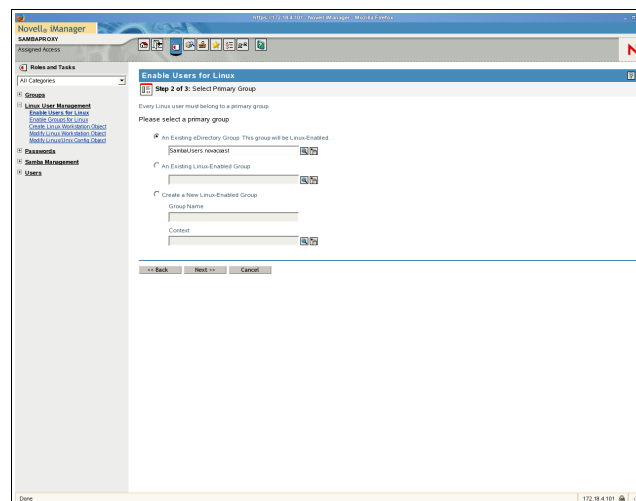


Object Selector View

8. Click the user you would like to enable and click *OK*.

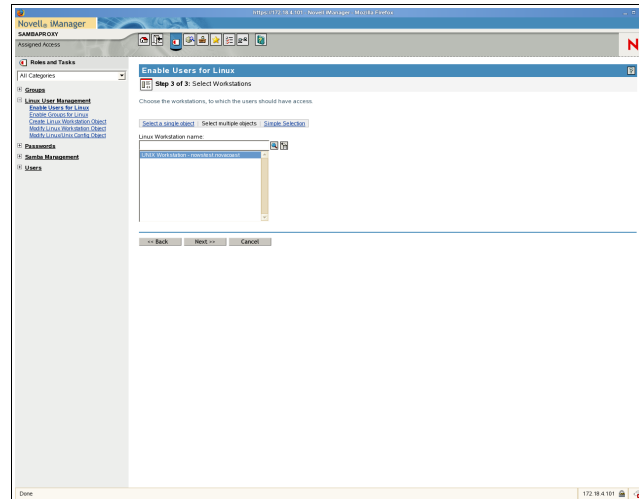
9. Click *Next*, to confirm your selection.

10. Next you will need to specify a group. Click the *Object Selector* (magnifying glass icon) and click *SambaUsers*.



11. Click *Next*.

12. Click *UNIX Workstation* and click *Next*.



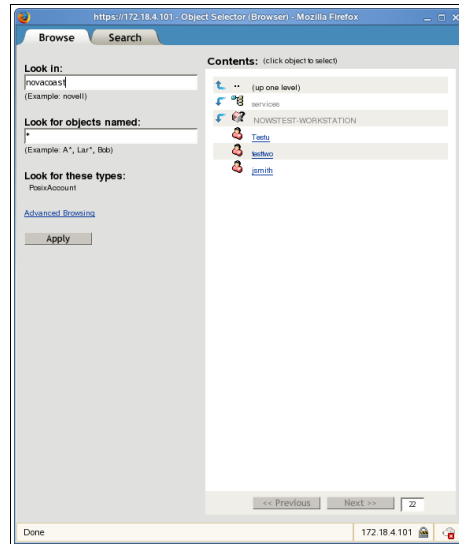
13. Click *Finish*.

14. Click *OK*.

2.2.2 Enabling Linux User for Samba

1. Login to Nows SBE console.
2. Click Products and Services.
3. Click Windows File and Print Sharing (Samba).
4. Click Samba Administration.
5. Click Samba Management, and click *Enable Linux User for Samba*.
6. Click *Object Selector* (magnifying glass icon).

7. Click desired user.



8. To authenticate through eDirectory, click *OK*.
9. Specify a universal password. Retype password, and click *OK*.
10. Click *OK* to finish.

2.2.3 Configuring Windows Hosts File

1. From the Windows client that will run QuickBooks, click *Start*, then click *Run*.
2. Type notepad, press *Enter*.
3. Open `c:\<Windows Folder>\system32\drivers\etc\hosts`
4. Next add a new line at the end of the hosts file: `ip_address NOWSBE_host_name`
In the example below, the server is `172.18.4.101 nowstest`

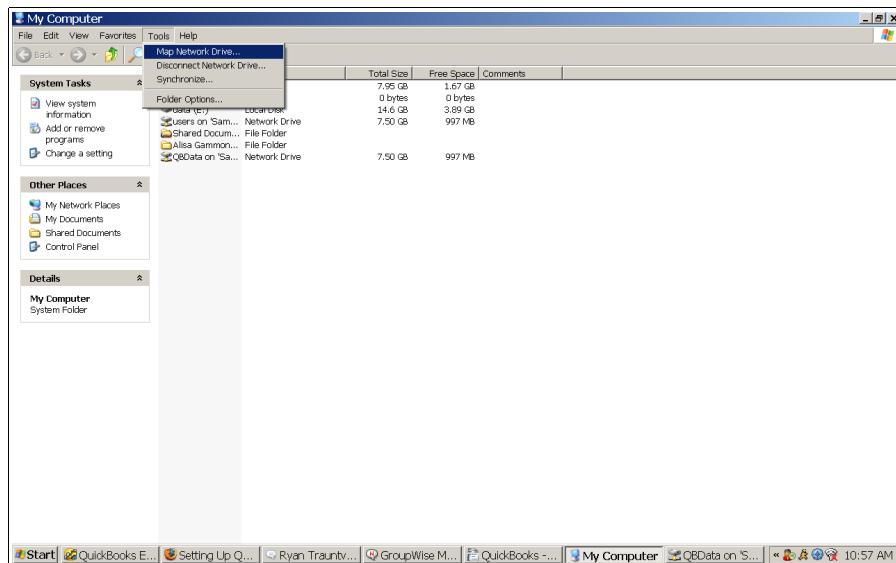
```
# Copyright (c) 1993-1999 Microsoft Corp.
#
# This is a sample HOSTS file used by Microsoft TCP/IP for Windows.
#
# This file contains the mappings of IP addresses to host names. Each
# entry should be kept on an individual line. The IP address should
# be placed in the first column followed by the corresponding host name.
# The IP address and the host name should be separated by at least one
# space.
#
# Additionally, comments (such as these) may be inserted on individual
# lines or following the machine name denoted by a '#' symbol.
#
# For example:
#
#       102.54.94.97       rhino.acme.com           # source server
#       38.25.63.10      x.acme.com             # x client host

127.0.0.1               localhost
172.18.4.101           nowstest
```

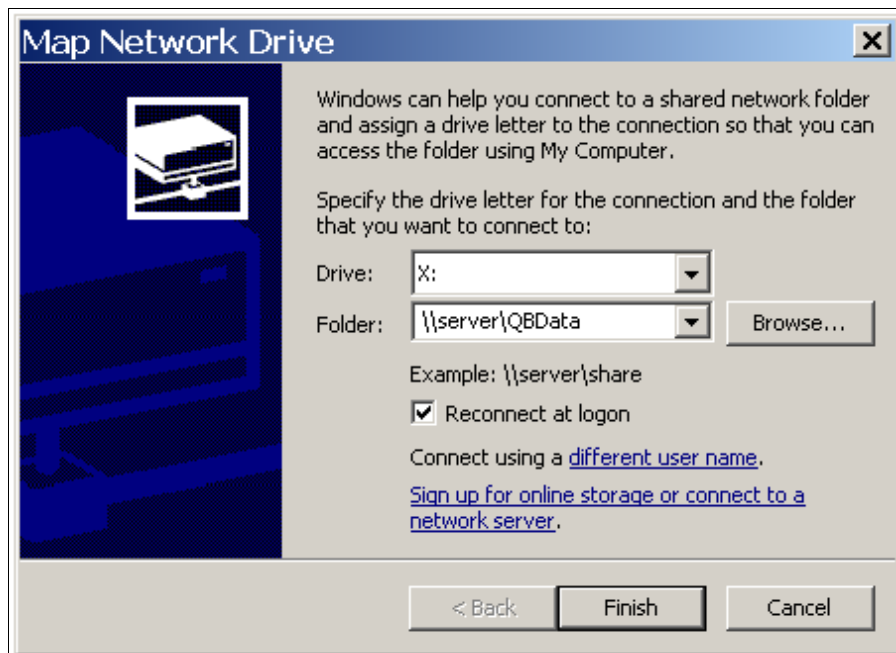
5. Test by pinging nowstest from a command prompt.
6. Click *File* and *Save*, then exit Notepad.

2.2.4 Connecting Windows to Samba

1. Click *Start*, then click *My Computer*.
2. Click *Tools* -> *Map Network Drive*.



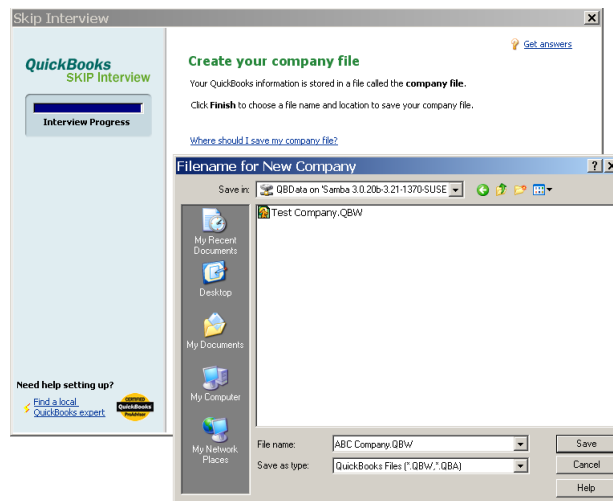
3. Type your NOWS SBE server IP address into the folder field. You will need to type \\(your NOWS SBE server name) \QBData



4. Click *Finish*.

2.2.5 Configuring QuickBooks to Save to Samba

1. Launch QuickBooks from desktop.
2. Click *Create Your New Company Profile*.
3. Click *Start Interview*.
4. Specify your company information and click *Next*.
5. Choose the appropriate check box and click *Next*.
6. Specify the month of your company's fiscal year and click *Next*.
7. Specify the industry of your company and click *Next*.
8. Specify administrator's user information.
9. Click *Next* to save your company file. Be sure to save it to the your Samba share location.
 - 9a. Click *My Computer*.
 - 9b. Click mapped *QBData* folder.
 - 9d. Click *Save*.



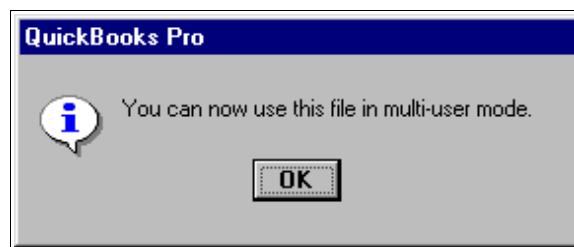
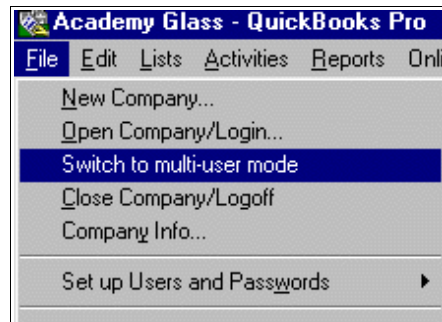
10. Specify your company's products, click *Next*.
11. Specify if your company charges tax, click *Next*.
12. Specify if you want to use sales receipts, click *Next*.
13. Specify if you want to use billing statements, click *Next*.
14. Specify if your company uses invoices, click *Next*.
15. Specify if you want to keep track of bills you owe, click *Next*.
16. Specify if you print checks, click *Next*.
17. Specify if your company accepts credit cards, click *Next*.
18. Specify if you want to track time, click *Next*.

19. Specify if your company has employees, click *Next*.
20. Specify if you would like to setup accounts in QuickBooks, click *Next*.
21. Select a start date to begin tracking your finances, click *Next*.
22. Specify if you would like to add a bank account, click *Next*.
23. Specify bank information, click *Next*.
24. Specify bank statement information, click *Next*.
25. Review bank account information, click *Next*.
26. Review income and expense accounts, click *Next*.
27. You have now completed your QuickBooks setup, click *Finish*.

2.2.6 Switching to Multi-User Mode

To begin using QuickBooks in multi-user mode, launch QuickBooks on the server computer and open the company file.

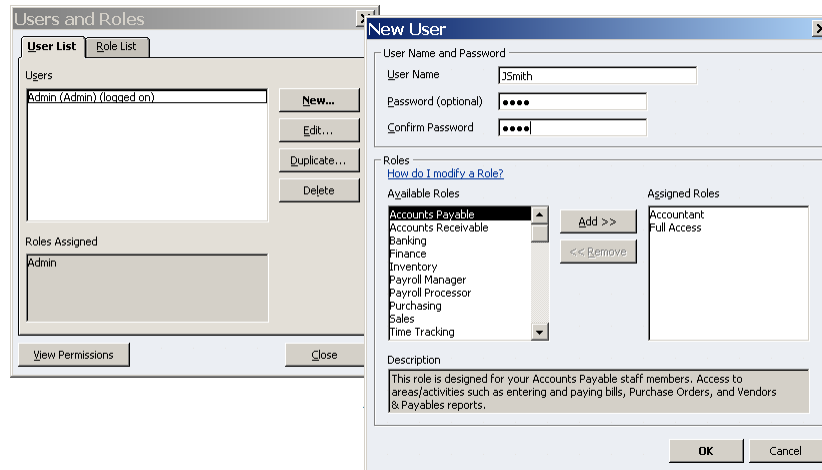
1. From the file menu, click *File*.
2. Click *Switch to Multi-User Mode*.



Now that you have specified multi-user mode, up to 5 users can simultaneously log into the company file.

2.2.7 Adding Users to the Company File

1. Click *Company* menu panel.
2. Click *Users*, and click *Setup Users and Roles*.
3. Click *New*.
4. Specify user information and user role, click *OK*.



5. The new user will now in the users and roles window, click *Close*.

2.3 Known Issues

1. Portable Backups Restore - In order to restore QuickBooks Portable Backups the files need to be restored on the local desktop that is the client for QuickBooks. Then the files may be moved to the NOWS SBE Samba share.